

# Study of Suitable Palladium and Gold Thickness in ENEPIG Deposits for Lead Free Soldering and Gold Wire Bonding

Yukinori Oda, Masayuki Kiso, Seigo Kurosaka, Akira Okada, Kota Kitajima, Shigeo Hashimoto\*

C. Uyemura and Corporation Ltd, Central Research Laboratory, Osaka, Japan, and

George Milad, Don Gudeczauskas

UIC Technical Center, Southington, Connecticut, USA

## Abstract

*A study was conducted to determine the reliability of lead free solder joints and wire bonds when ENEPIG is used as the surface finish. Different palladium and gold thicknesses were evaluated and their subsequent effects on the composition of the inter-metallic compound (IMC) and the wire bond strength were determined. Optimum thickness for lead free soldering and wire bonding were identified. A thickness range where both activities can be completed with high reliability was determined. The IMC was studied for both Sn-3.5Ag and for Sn-3.0Ag-0.5Cu (SAC305) solder alloys, in an attempt to explain the difference in solder joint reliability between the two lead free solders.*

**Keywords:** ENEPIG, lead free solder, gold wire bonding, Intermetallic

## 1. Introduction

Nowadays, Electroless Nickel/Immersion Gold (ENIG) is commonly used for substrates that require soldering and mechanical contacting. Although ENIG with increased gold thickness (electroless gold) is a viable finish for gold wire bonding, presently electrolytic Ni/Au is still a widely used finish for this application since concerns still remain about issues with ENIG nickel corrosion and impact resistance.

However, electrolytic plating has its own challenges in meeting today's requirements of weight and form factor that require finer lines and smaller pitch. Electroless plating is a more suitable finish for electronic parts as they continue down the path of smaller and lighter.

It is already established that Electroless Nickel/electroless palladium / Immersion Gold (ENEPIG) has excellent solderability for Sn-Ag-Cu based solders and forms high reliability wire bonds. ENEPIG is becoming the choice surface finish to meet present and future market demands.

In this paper, ENEPIG deposits were produced using commercially available chemicals to evaluate the reliability of lead free soldering and wire bond reliability as a function of palladium and gold deposit thicknesses. The data will show that high reliability soldering and bonding could be achieved on the same surface with a thickness of 0.02 to 0.1um for palladium and as small as 0.2um for gold.

Furthermore, solder joints and IMC formation for Sn-3.0Ag-0.5Cu and Sn-3.5Ag solders with ENIG and ENEPIG were studied. The solder joints were subjected to heat treatment at 150°C for a period of 1,000 hours. Subsequent analysis of the IMC showed that ENEPIG and ENIG showed the same

IMC alloy formation with the Sn-3.0Ag-0.5Cu<sup>(1)</sup>, while the IMC alloys formed with Sn-3.5Ag solders were different for ENIG as compared to ENEPIG.

## 2. Test Method

Two test vehicles were used in this study. Both were copper-clad laminate to which a 20 um thickness of electrolytic copper was plated. For the plating, commercially available plating chemicals manufactured by C. Uyemura & CO., LTD were used. Table-1 shows this plating process.

To one of the test vehicles soldermask was applied and a soldermask defined 0.5mm BGA pattern was developed.

For IMC analysis, plating times were adjusted to produce plating deposit thicknesses of 5um of Ni, 0.05um of Pd, and 0.05um of Au (type F).

**Table-1. Ni-P/Pd/Au Plating Process**

Process	Chemical	Temp.	Time.
Cleaner	ACL-009	50 deg.C	5 min.
rinse			
Soft etching	SPS type	25 deg.C	1 min.
rinse			
Acid rinse	10% H <sub>2</sub> SO <sub>4</sub>	r.t.	1 min.
rinse			
Pre-dipping	3% H <sub>2</sub> SO <sub>4</sub>	r.t.	1 min.
Activator	MNK-4	30 deg.C	2 min.
rinse			
Electroless Ni	NPR-4	80 deg.C	25 min.
rinse			
Electroless Pd	TPD-30	50 deg.C	5 min.*
rinse			
Electroless Au (F)	TSB-72	80 deg.C	12 min.
Electroless Au (A)	TWX-40	82 deg.C	25 min.*

\*: Different thickness was made by changed the dipping time.

Electroless Au (F) : For flash (thinner) gold.

Electroless Au (A) : For Heavy (thicker) gold.

For study of the effects of different Pd and Au thickness, the Ni thickness was fixed at 5um. The desired thicknesses of Pd and Au (type A) were then plated. Type A gold bath is capable of producing higher thicknesses of Au as compared to gold bath type F and was used for thicker gold deposits.

### 3. Results of Solderability Testing

Table 2 is a summary of the solderability test conditions which are considered severe assembly conditions. Fig.-1 shows the results of this testing.

**Table-2 Solderability Testing Conditions**

Solder ball	Senju Sn-3.0Ag-0.5Cu 0.6mmφ
Flux	Senju 529D-1 RMA type
Reflow instrument	TAMURA TMR-15-22LH
Reflow condition	5 times reflow at 260 deg.C top.
Ball pull instrument	Dage series 4000
Ball pull speed	1000μm/sec

		Au thickness (um)								
		0.03	0.05	0.07	0.1	0.15	0.2	0.25	0.3	0.4
Pd thickness (um)	0*	5	20	20	10	10	13	10	8	5
	0.01	90	90	90	90	90	80	80	55	60
	0.02	100	100	100	100	100	90	90	90	90
	0.03	100	100	100	100	100	100	100	100	90
	0.05	100	100	100	100	100	100	100	100	98
	0.07	100	100	100	100	100	100	98	95	90
	0.10	90	90	90	90	90	90	88	85	80
	0.12	85	85	83	85	80	80	60	73	55
	0.15	50	60	60	55	55	55	55	60	50
	0.20	50	60	50	55	58	70	30	35	30
0.30	20	45	40	30	20	30	20	30	30	

**Fig.-1 Results of Solderability Testing**

Values in Fig.-1 show a score for fracture mode after the completion of solder ball pull testing. Points were assigned to 3 types of fracture modes. For a complete fracture in the solder ball, 5 points were assigned. If the fracture interface showed <25% IMC it was assigned a point value of 2.5. Finally, a fracture that showed >25% IMC at the fracture surface was assigned zero points. For each test condition 20 balls were pulled and the 20 fracture surface were examined and assigned values as above. For example; if all 20 balls fractured completely in the solder with no IMC showing, each would be assigned 5 points for a total score of 100.

The calculation result indicates that solderability (for these severe test conditions) in case of palladium deposit thickness of 0 um, i.e., ENIG is less robust compared to that if only a small thickness of palladium is contained. However, as the palladium deposit thickness increases, it begins to show adverse effects on the fracture mode.

On the other hand increases in the gold deposit thickness (deposits up to 0.4um) do not show a similar degradation on fracture mode. If solder joint reliability is the only consideration, a palladium deposit thickness of approximately 0.02 to 0.1 um and gold deposit thickness of approximately 0.05um are more than adequate to achieve high reliability

solder joints.

### 4. Gold and Palladium Deposit Thickness and Wire Bondability

In a previous paper, it was reported that ENEPIG deposits, when exposed to heat treatment could still prevent the diffusion of the underlying nickel, even in areas where the palladium deposit is extremely thin<sup>(2)</sup>. Nickel diffusion to the gold surface is a major contributor to loss of bond strength.

The same test samples as those used for the solderability testing shown in Fig.-1 were used. Heat treatment at a temperature of 175°C for a period of 16 hours was completed before conducting the wire bonding testing under the conditions shown in Table-3.

**Table-3 Wire Bonding Testing Conditions**

Wire	1mil-Gold
Capillary	B1014-51-18-12 (PECO)
Wire bonder	TPT HB16
Stage temperature	150 deg.C
Ultra sonic	250mW(1st), 250mW(2nd)
Bonding time	200msec(1st), 50msec(2nd)
Loading force	25g(1st), 50g(2nd)
Step	0.7mm (1st to 2nd wire length)
Wire pull instrument	Dage series 4000
Wire pull speed	170μm/sec

Fig.-2 shows the results of gold wire bond pull testing. The pull test data is the result of pulling 20 wires per each condition. Values shown in Fig.-2 are the average value of fracture strength obtained by the pull test.

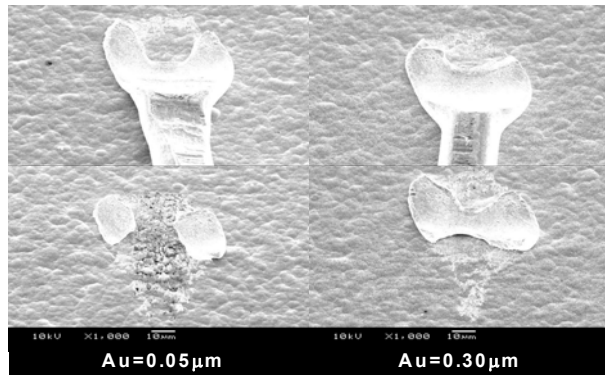
As the results show at a palladium deposit thickness of 0um, i.e. no palladium, a gold deposit thickness > 0.3um is required to obtain good wire bond values. In contrast, the wire bond strength for ENEPIG was higher, even in areas with very low palladium deposit thickness. Further increase in palladium thickness did not improve the wire bond strength.

		Au thickness (um)								
		0.03	0.05	0.07	0.1	0.15	0.2	0.25	0.3	0.4
Pd thickness (um)	0 *	**	4.3	4.4	3.9	3.8	3.7	5.1	8.6	9.1
	0.01	6.8	7.9	7.9	8.1	8.7	8.6	9.6	10.6	10.5
	0.02	6.7	7.9	8.6	8.2	8.5	9.0	9.5	10.2	10.7
	0.03	6.0	7.7	8.4	8.2	8.2	9.3	9.3	10.7	10.4
	0.05	6.8	7.6	8.9	8.1	8.2	9.1	9.3	10.1	10.6
	0.07	7.0	7.8	8.1	8.3	8.8	9.5	9.1	10.9	11.1
	0.10	6.0	6.7	8.1	8.3	8.4	9.3	9.2	10.0	10.8
	0.12	7.2	8.4	8.9	8.8	8.9	9.5	9.6	10.9	10.5
	0.15	6.5	8.5	8.6	8.0	9.1	9.4	10.2	10.3	10.7
	0.20	6.0	8.8	8.9	8.7	9.1	9.4	10.0	10.3	10.5
0.30	6.6	8.8	8.5	8.3	9.0	9.6	10.0	10.2	10.6	

**Fig.-2 Results of Wire Bonding Testing**

However, increasing the thickness of the gold deposit showed a marked improvement in wire bond strength. The palladium deposit thickness was fixed at 0.05um to check the effect of gold deposit thicknesses of 0.05um and 0.3um, respectively.

Points with 6.5g wire pull strength in the gold deposit thickness of 0.05 $\mu$ m and those with 11.5g strength in the gold deposit thickness of 0.3 $\mu$ m were chosen, to conduct SEM observations on the secondary bond surface after the wire was pulled. Fig.-3 shows the results of these observations. Observation on the fracture surface indicated a wide difference



**Fig.-3 Difference in shape between secondary wire bond when making change to gold deposit thickness**

between the 2 gold thicknesses tested. Exposed underlying metal was evident in the case of the 0.05 $\mu$ m gold thickness. In contrast with the 0.3 $\mu$ m gold thickness no exposed underlying metal was evident.

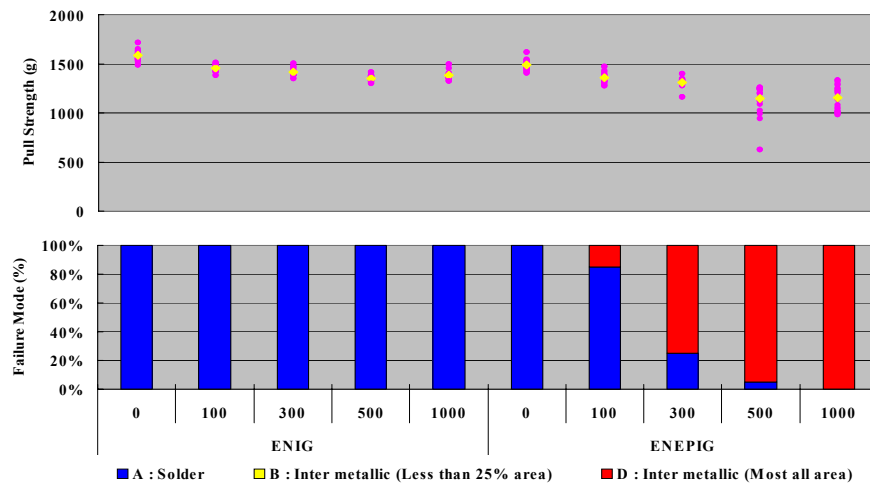
Since gold is a soft metal, it can be theorized that unless the gold deposit has a certain level of thickness for wire bonding, the underlying metal is scraped off to degrade the pull strength. The thicker gold deposit has a cushioning effect on the bond and produces a bond of superior strength. Insufficient gold and the possibility of nickel diffusion are the main contributors to the loss of wire bond strength.

## 5. Analyses of IMC Alloy Layers

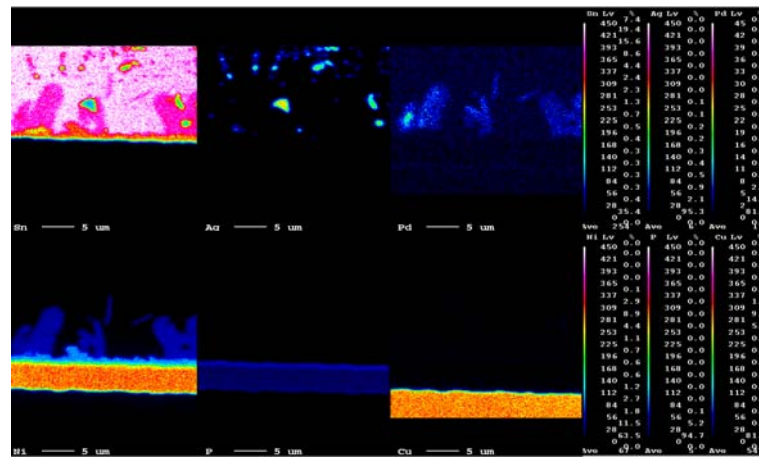
As can be judged even from Fig.-1, the solder joint formed with ENEPIG maintains a high degree of reliability under strict reflow conditions compared to that of ENIG. Consequently, reflow was conducted at a temperature of 240°C as plated, and samples were also aged at 150°C for a period of 1,000 hours to simulate long-term reliability testing. In the previous paper, reliability evaluations were made on solder joints using Sn-3.0Ag-0.5Cu and Sn-37Pb solders<sup>(2)</sup>. In this paper, however, we made evaluations on solder joint reliabilities using Sn-3.5Ag solder and showed the results in Fig- 4. ENEPIG showed degradation in strength and fracture mode as heat treatment time elapses when using Sn-3.5Ag solder, which was the same as that shown when using Sn-37Pb solder. In addition, like the previous paper, EPMA analysis was done of the

distribution of each element at bonded interfaces after 1,000 hours of heat treatment at a temperature of 150°C. It turned out as shown in Fig.-5, that Sn-3.5Ag solder showed the same palladium aggregates that were observed with Sn-37Pb solder. In contrast when Sn-3.0Ag-0.5Cu is soldered to an ENEPIG deposit, the palladium at the IMC is uniformly distributed with no signs of aggregates. This absence of palladium aggregates with SAC solder is a possible reason why the solder joint reliability is higher than either Sn-37Pb or Sn-3.5Ag, under the conditions of testing.

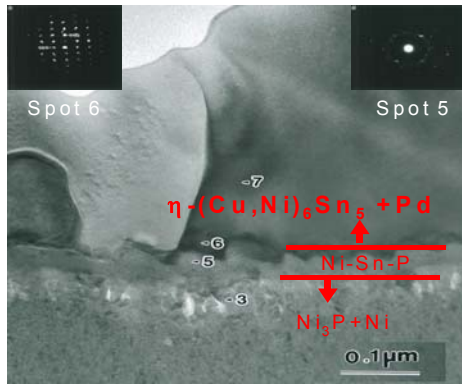
The details of the IMC layers for Sn-3.0Ag-0.5Cu and Sn-3.5Ag were analyzed by TEM. Fig.-6 shows TEM image in the vicinity of IMC layers with Sn-3.0Ag-0.5Cu soldered to the ENEPIG deposit after applying heat treatment at a temperature of 150°C for a period of 1,000 hours, and Fig. 7 shows the result of EDS analysis of the spots shown in the micrograph. According to the results of EDS measurement and diffraction measurement, Spot 3 is a layer referred to as the “phosphorous-rich layer” and assigned Ni<sub>3</sub>P+Ni. Spot 5 was assigned Ni-Sn-P since Ni, Sn and P were detected and no crystals were defined by diffraction<sup>(3)</sup>. The Spots 6 and 7 had the same hexagonal crystal as that of Cu<sub>6</sub>Sn<sub>5</sub> from the results of TEM diffraction measurement. In addition, since the EDS measurement result showed the detection of Ni, these spots were identified as (Cu, Ni)<sub>6</sub>Sn<sub>5</sub>. Furthermore, since this layer had uniform palladium distribution, the Spots were assigned as (Cu, Ni)<sub>6</sub>Sn<sub>5</sub>+Pd. Subsequently, Sn-3.5Ag was soldered to the ENEPIG deposit, and we then conducted TEM and FE-SEM measurement of the IMC layers formed after aging at a temperature of 150°C for a period of 1000 hours. The results are shown in Fig.-8.



**Fig.-4 Results of Sn-3.5Ag Solderability Testing (Long-term heat treatment testing at a temperature of 150°C)**



**Fig.-5 Distribution of each element at bonded interfaces after heat treatment at a temperature of 150°C for a period of 1,000 hours, after mounting Sn-3.5Ag solder balls to ENEPIG deposit**



**Fig.-6 TEM observation on IMC with Sn-3.0Ag-0.5Cu soldered to ENEPIG deposit after heat treatment applied at a temperature of 150 degree C for a period of 1,000 hours**

Quantitative analysis result (EDS) ; at%

Spot	P	Ni	Cu	Pd	Sn
3	28.7	68.7	0.4	0.0	2.1
5	18.0	64.2	0.1	0.0	16.8
6	0.0	18.9	33.2	0.6	47.3
7	0.1	17.2	35.1	1.1	46.4

**Fig.-7 Results of EDS of TEM Image in Fig.-6**

Applying long-term heat treatment under these conditions, two layers were found one was columnar and the other was of uniform crystal structure. The results of EPMA mapping (Fig. 5) show that the palladium aggregates were found only in the columnar alloy layer.

Further analyses were conducted on IMC Layer Spots 7 to 9 in the lower main part, the results of the EDS analysis shown in Fig. 9. Furthermore, from the diffraction results, we determined that the Spot 7 was Ni-Sn-P layer, and the Spots 8 and 9 were Ni<sub>3</sub>Sn<sub>4</sub> layers.

Subsequently, the diffraction result indicates that columnar parts (Spots 1 to 5) of the upper layer are of structure close to Ni<sub>3</sub>Sn<sub>4</sub>, while the EDS result indicates a ratio obviously different from that of Ni<sub>3</sub>Sn<sub>4</sub>. These ratio differences were observed with thick<sup>(3)</sup> gold deposits where an alloy (Au, Ni)Sn<sub>4</sub> was identified. Since AuSn<sub>4</sub> and PdSn<sub>4</sub> produce the same orthorhombic crystal and due to the element ratio of EDS, we determined this alloy as (Pd, Ni)Sn<sub>4</sub>. This (Pd,Ni)Sn<sub>4</sub> alloy has portions that vary in palladium content.

The EPMA measurement in Fig. 5 showed the distribution of the palladium deposit thickness in alloy layers.

Additional observations on the cross section of alloy layers with varying palladium thicknesses were conducted. The reflow process was conducted once at a temperature of 240°C and gave the results showed in Fig. 10. The results indicate that ENIG (Pd=0.00um) has formed needle-like alloy layers and ENEPIG has formed uniform alloy layers. However, if the palladium deposit thickness is increased to 0.08um or higher, the alloy layers become markedly thicker. The increased thickness has an adverse effect on the reliability of the solder joint.

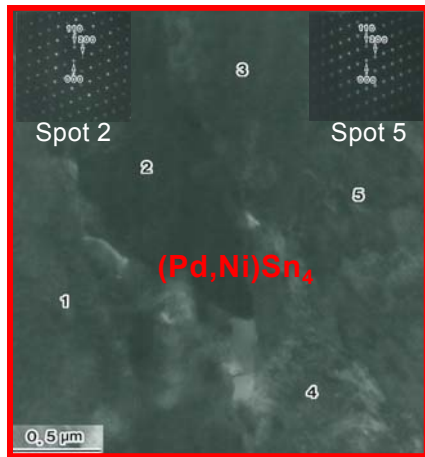
## 6. Conclusion

TEM analysis was conducted on test pieces that were aged at a temperature of 150°C for a period of 1,000 hours after soldering Sn-3.0Ag-0.5Cu and Sn-3.5Ag to ENEPIG deposits. For Sn-3.0Ag-0.5Cu solder, an alloy layer (Cu,Ni)<sub>6</sub>Sn<sub>5</sub> with even palladium distribution was identified as the main layer. On the other hand, Sn-3.5Ag solder, revealed a distinct columnar alloy layer (Pd, Ni)Sn<sub>4</sub> on the uniform alloy layer Ni<sub>3</sub>Sn<sub>4</sub>. Consequently, it is believed that the presence of the alloy layer (Pd, Ni)Sn<sub>4</sub> adversely affects solder joint reliability. In addition, it was found that solder joint reliability was more dependent on palladium deposit thickness than gold deposit thickness, and thereby it was essential to control the palladium deposit thickness.

On the other hand, with regard to wire bonding, it is indicated that the ENEPIG deposit makes it possible to control nickel diffusion to the deposit surface<sup>(2)</sup>. In this paper, the palladium deposit and the gold deposit thickness were varied, to determine their role on wire bond strength. As a result, it was found that increased gold thickness has a cushioning effect and is more effective in enhancing the wire bond strength as compared to increasing the palladium thickness.

Summing up the study, solderability requires proper palladium deposit thickness, while thicker gold deposit is more advantageous for wire bondability. Increasing the gold thickness does not improve solder joint reliability, nor does increasing the palladium thickness improve wire bondability. Consequently, it was proved that controlling the palladium deposit thickness and the gold deposit thickness could be balanced to give high reliability for both soldering and wire bonding.

In recent years, electroless plating due to increasing reduction in weight and size of electronic parts has been getting attention in addition to lead-free soldering materials. With a good understanding of how the ENEPIG finish interacts with different lead free solders, ENEPIG can be the choice electroless alternative for today's challenging electronic demands.



Quantitative analysis result (EDS) ; at %

Spot	P	Ni	Pd	Sn
2	0.0	17.9	3.7	78.4
5	0.2	19.1	0.7	79.9
7	10.8	66.0	0.0	23.2
8	0.2	44.7	0.0	55.1
9	0.3	43.4	0.0	56.2

Fig.-9 Results of EDS of TEM Image in Fig.-8

#### Bibliography

- [1] Chi-Won Hwang, Katsusaki Suganuma. J.Mater. Res., **18**, 2540, Nov (2003)
- [2] Donald Gudeczauskas et al, 39<sup>th</sup> International Symposium on Microelectronics, October 8-12, 2006, San Diego
- [3] V.Vuorinen, T.Laurila, H.Yu, and J.K.Kivilahti. J.appl.Phys.**99**, 023530 (2006)

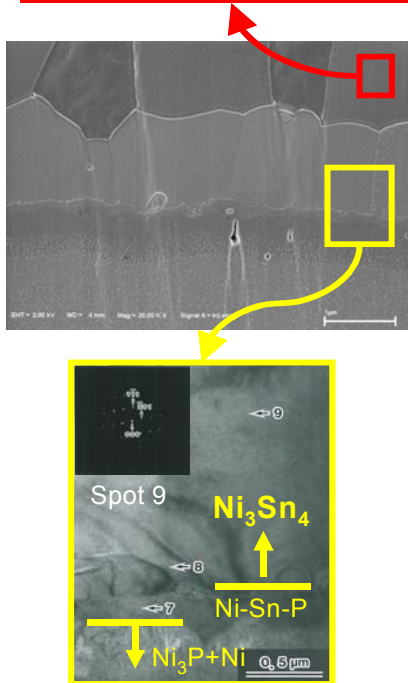
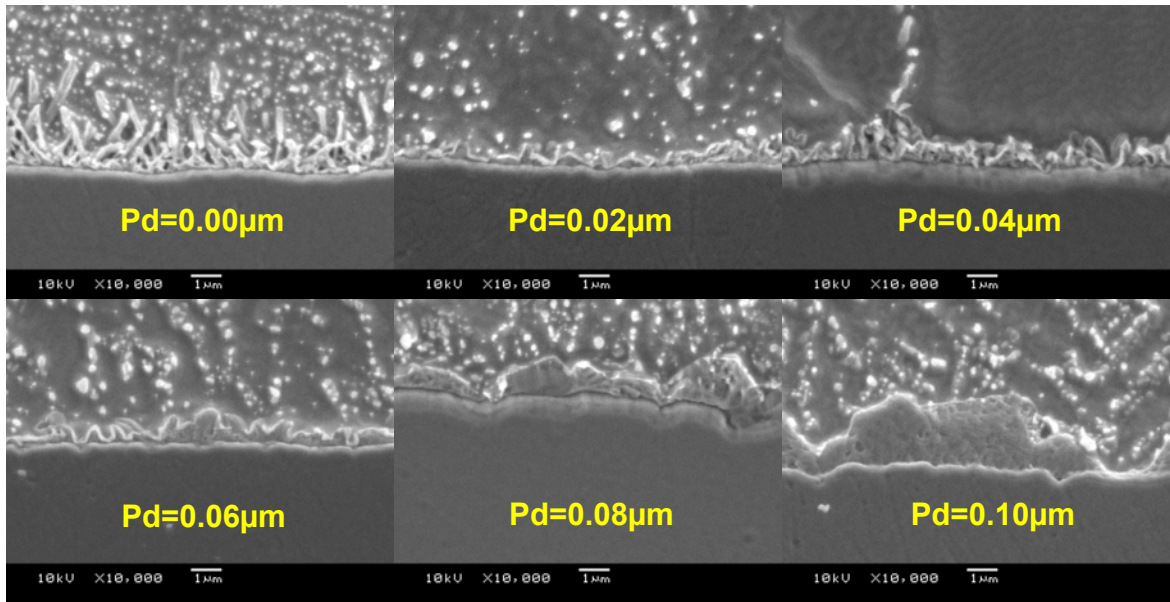


Fig.-8 TEM and FE-SEM observations on IMC with Sn-3.5Ag soldered to ENEPIG deposit after heat treatment applied at a temperature of 150°C for a period of 1,000 hours





**Fig.-10 Photograph of alloy layer after conducted the reflow process once at a temperature of 240°C on Ni-P/Pd/Au deposit with changed palladium deposit thickness**



**UYEMURA Corporate Headquarters:**

3990 Concourse, #425 • Ontario, CA 91764 • ph: (909) 466-5635

**UYEMURA Tech Center:**

240 Town Line Road • Southington, CT 06489 • ph: (860) 793-4011

For sales and product information, [click here](#)